

Getting Started

1. COMMIT to give.

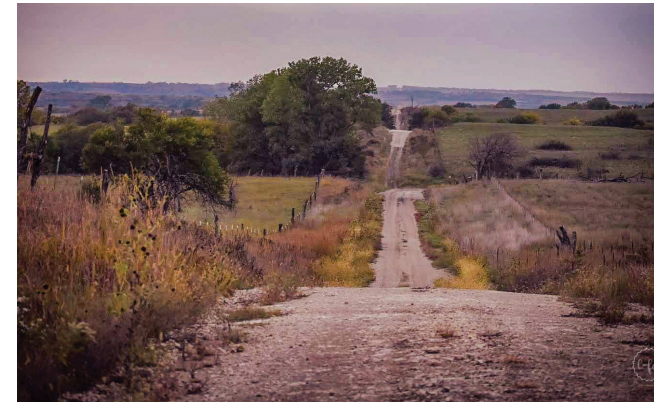
Once you make the commitment to give you can create a charitable fund today, establish it in your will, or create it through a trust arrangement.

2. CHOOSE a type of fund.

There are a variety of fund types to meet your philanthropic and family goals. You can give broadly, support specific causes or stay involved with your giving by advising grants. Involve your family. Remain anonymous. It's up to you.

3. DECIDE what to give.

Almost any kind of asset can be used to start your fund. You can explore options such as bequests and charitable trusts. Tax deductions are earned at the time of your gift.



Being an affiliate of the Greater Manhattan Community Foundation (GMCF) offers a number of benefits that balance local control with professional management services. GMCF is a 501(c)(3) tax-exempt organization, which enables its affiliated funds to receive tax-deductible contributions. To read more about GMCF Jackson County Community Foundation was established in 2019 to support programs that enhance the quality of life for Jackson County residents today and into the future.

Jackson County Community Foundation was established in 2019 to support programs that enhance the quality of life for Jackson County residents today and into the future.

To learn more about the Jackson County Community Foundation, and how our services can further your charitable goals, please contact us. We encourage you to schedule a meeting to discuss maximizing the impact of your gift, today and for the future. And remember, no gift is too small, no question is unimportant. All donors are significant to our community and you can make a difference!

To learn more please contact:
Jackson County Community Foundation
P.O Box 381
Holton, Kansas 66436
e-mail: info@jacksoncountycf.org

Jackson County Community Foundation
is an affiliate of the Greater Manhattan
Community Foundation, a non-profit
501(c)(3) organization
— EIN #48-1215574,
incorporated in the State of Kansas.



Inspiring and Connecting Thoughtful Giving

www.jacksoncountycf.org

Why Partner with Us

THERE ARE MANY REASONS people choose to give through the Jackson County Community Foundation.

- We are a LOCAL organization led by a board composed of community leaders. Our board members have the expertise to address community issues and evaluate local nonprofit groups, today and for the future.
- We offer EASY SET-UP AND ADMINISTRATION. Establishing a fund can be done in less time than it takes to open a bank account.
- We assist individuals and families in BUILDING A LEGACY by helping them create a permanent fund, called an endowment, with their gifts.
- We offer MAXIMUM TAX ADVANTAGES under state and federal law.
- We offer DIVERSE FUND TYPES, providing donors a continuum of options for how involved they want to be in grant making.
- We offer GEOGRAPHIC FLEXIBILITY. The primary focus of the Jackson County Community Foundation is the Jackson County area. However, grants may go to charitable organizations within the U.S.
- Administrative fees on funds at 1% or less.

Types of Funds

OUR FLEXIBILITY allows you many fund options - it's your choice.

- UNRESTRICTED FUNDS - Think broadly. Choose the Jackson County Community Foundation to identify community needs and opportunities, and then distribute grants where they are most needed.
- FIELD-OF-INTEREST FUND - Address specific issues. Decide the general purpose of your fund, such as the environment, arts, health or education. Then the Jackson County Community Foundation will identify projects that serve your fund's purpose.
- DESIGNATED FUND - Provide ongoing support. Specify particular charitable agencies or organizations to receive the income from your endowed (permanent) fund.
- SCHOLARSHIP FUND - Support student education. Provide scholarships to students using guidelines you establish, such as high school or college attended, merit, need, or field of study.
- DONOR ADVISED FUND - Stay involved. Allows donors to actively participate in the grant making process. Donors may recommend disbursements to specific charities at any time. Funds can either be endowed or have the principal expended.

How We Can Help You

Charitable giving should be a JOY, not a BURDEN. Your gift should be both easy and rewarding. We can:

- Accept a wide VARIETY of ASSETS, including ag related, and facilitate complex forms of giving, helping you meet both financial and charitable goals.
- Work with family members, if you wish, to develop an effective STRUCTURE and FRAMEWORK for family philanthropy.
- Partner with PROFESSIONAL ADVISORS to create individual, effective approaches to charitable giving. Your personal financial planner can continue to manage your funds.
- IDENTIFY nonprofit organizations that address issues important to you, and VERIFY their charitable status. We also provide grant making and documentation support.
- MANAGE all investment, grant making and administrative activities. We handle the paperwork.
- Provide REGULAR FINANCIAL REPORTS detailing your contributions, grants and fund balance.

Naming Your Fund

Many funds are named for the donor or their family, or as a memorial to someone special. Or, you may choose a name that reflects your fund's charitable purpose, or one that ensures your privacy. Every grant from your fund will carry this name forward through time.

Everyone Can Be a Donor

Most of the Jackson County Community Foundation's existing funds are open to individual contributions. For a list of those funds, visit:

www.jacksoncountycf.org

No gift is too small; all gifts are significant!

*Generosity is a Catalyst
It creates HOPE and possibility.
It embraces the NEEDS of real people.
It celebrates our shared HUMANITY.
So what does it take to give?
Compassion...Initiative...Purpose
To reach its full potential, Generosity also needs
INTEGRITY and GUIDANCE.
When people decide to give,
a community is STRENGTHENED.
It's truly as simple as that.*



Mission: To improve the quality of life in Jackson County by increasing charitable giving, educating and connecting donors to community needs they care about, and leading on critical community issues.